

Unilumin 洲明



ENCORE X
VIDEO WALL SYSTEMS

Rental Utile Series



Stable



No gap



Less power



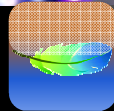
High refresh rate



Easy installation



High grey scale



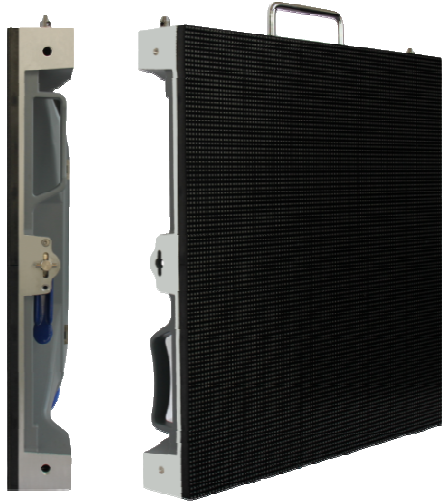
Ultra thin & light



High definition

**Ultra thin and light
Fast installation**

Utile- Indoor



- ✓ Ultra thin and super light
- ✓ Die-casting aluminum structure, high precision seamless installation
- ✓ 500 × 500mm standard cabinet, easy area calculation
- ✓ Fast and efficient in transportation and screen installation
- ✓ SMD black LED, wide viewing angle, high contrast (5000:1), soft image
- ✓ Using special lock to connect the cabinets without the aid of other tools
- ✓ Standard module and standard cabinet, fasten production period

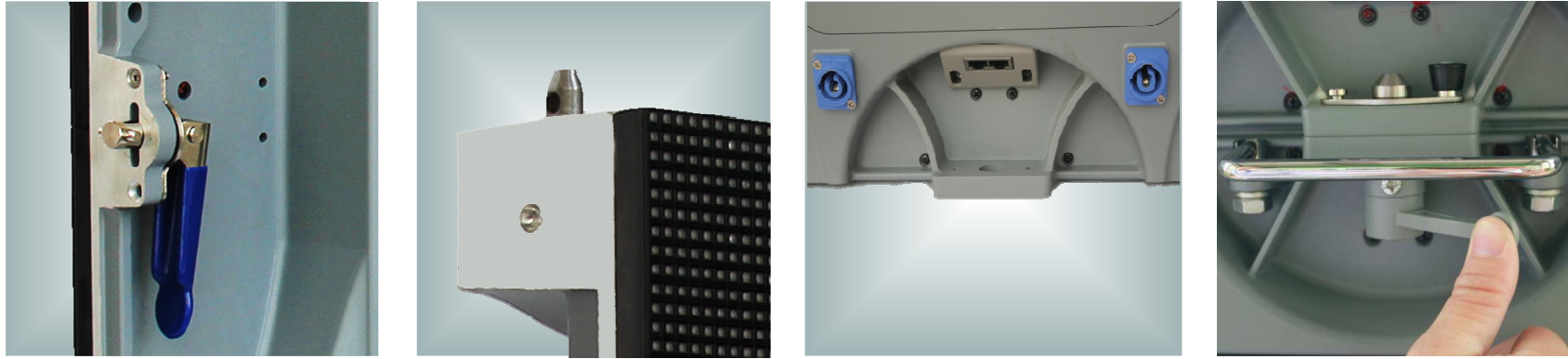


Utile- Special features



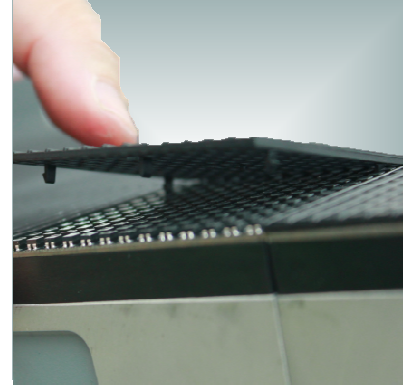
- SMD black lamp: High contrast ratio
- Die-casting aluminum material: Excellent heat dissipation
- Weight: 8.5kg per cabinet, 34kg per sqm
- Flight case: 10 in 1. Easy for transportation

Utile- Special features



- Lock catch on the left hand side, easy for installation
- Raise the locating dowel to enhance the surface flatness
- Power and signal connector with design of 45° incline, easy to connect
- Special buckles structural connection between the cabinets, no need any other tools, seamless splicing

Utile- Special features



- Rear maintenance
- No screw mask design, enhance consistency effect of images
- Snap-in mask, easy to install and dismantle

Rental project references



Unilumin Technology is Lighting Up a Better Future!

Utile- Indoor specifications

Model	R3	R4	R5A	R5B	R6A	R6B
Pixel pitch (mm)	3.9	4.8	5.2	5.68	6.25	6.94
Brightness (cd/m ²)	1200	1300	1200	1200	1100	800
LED type	SMD2121	SMD3528 Black				
Contrast	5000:1					
Viewing angle	120:100					
Cabinet resolutions	128×128	104×104	96×96	88×88	80×80	72×72
Refresh rate	≥1000Hz	≥1000Hz	≥1000Hz	≥1000Hz	≥1000Hz	≥1000Hz
Power (Max/Average)/ cabinet	165W/55W	195W /65W	180W/60W	180W/60W	165W/55W	150W/50W
Module size (mm)	250×250					500×250
Cabinet size (mm)	500×500					
Weight (kg)	8.5					
Processing depth	14bit					
Ingress protection	IP30					
Operating Temperature/Humidity	0℃~+45℃/10~90%RH					
Storage Temperature/Humidity	-40℃~+60℃/10~90%RH					
Installation method	Hanging / Ground					
Brightness control	Manual/Automatic					
Video frame rate	50/60Hz					
Input voltage	100~240VAC					
Input power frequency	47~63Hz					
Input signal	S-VIDEO,CVBS,YPbPr,RGB,VGA,DVI,HDMI,HDSDI & DisplayPort,etc					
Data interconnection	CAT5 Cable (L≤140m), Multi-mode fiber (L≤500m), Single mode fiber (L≤20km)					
Life Time	≥100,000 hours					